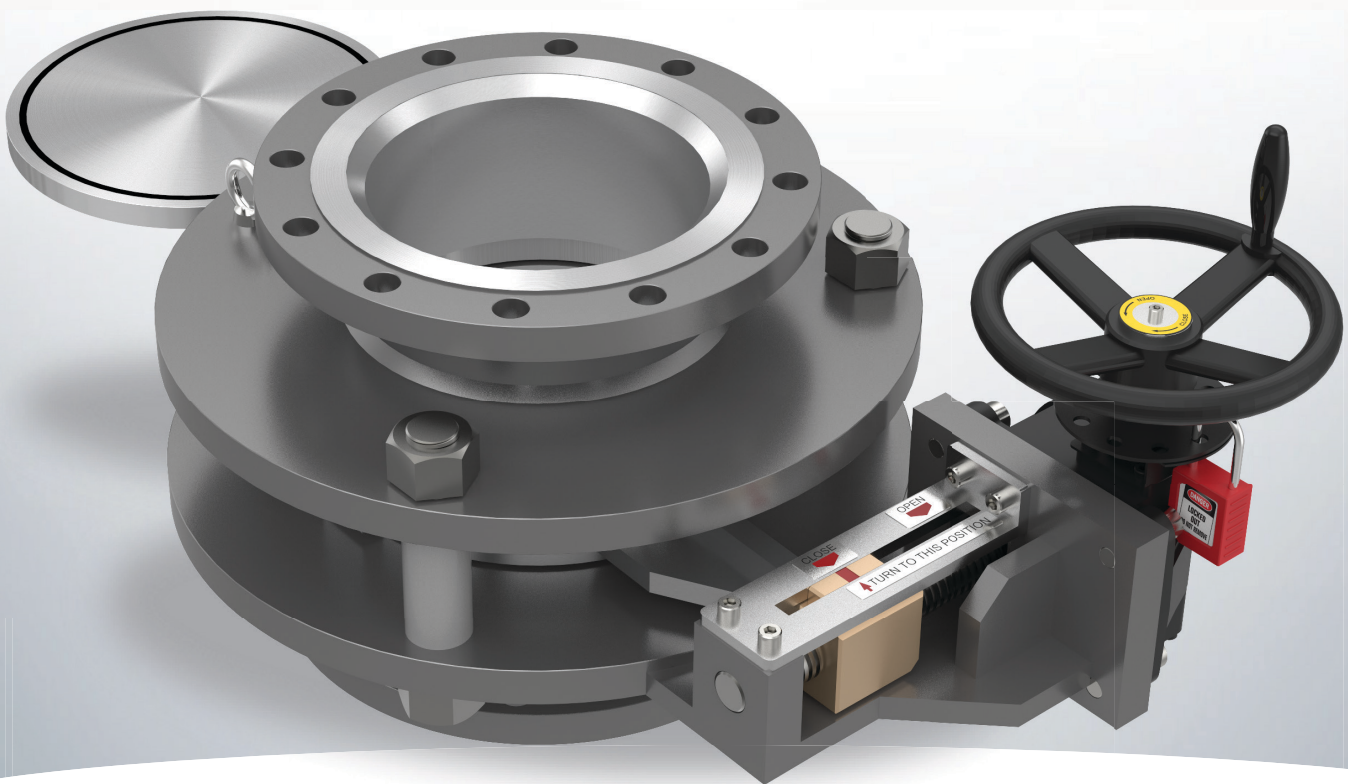


SWING TYPE

Instruction Catalogue



GENERAL INFORMATION

INSTRUCTION & FEATURES

It take within 3 minutes for one operator to blank a line, operating the handwheel and rotating the blind into place, without line spreading.

Again, all inline movement is internal, eliminating the potential for pipe-joint stress. As one of the most popular model, quick operation with no line spread and correct spectacle positioner shall make easy and safe pipe line isolation.

TECHNICAL SPECIFICATIONS

NOMINAL DIAMETER

NPS 1/2 (DN15) - NPS100 (DN2500)

PRESSURE RATING

ASME Class 150 to Class 1500

Other pressure classes up to ASME 2500

Available upon request

FUNCTION

Gas & Liquid Perfect Isolation(Zero Leakage)

TEMPERATURE RANGE

Standard Design : -20°C ~ +200°C

High Temp. Design : +200°C ~ +816°C

Cryogenic Design : -196°C

MATERIALS

BODY : Carbon Steel, Stainless Steel, Special Material (Duplex, Hastelloy, Monel, Inconel etc.)

BLIND : Stainless Steel, Special Material (Duplex, Hastelloy, Monel, Inconel etc.)

MOVING PARTS & SEALING SURFACE are Anti-corrosion Materials

OPERATION METHOD

Manual Operation

Electric, Pneumatic or Hydraulic Operation

APPLICATIONS

• REFINERY

- > Ethylene Furnace
- > De coking line
- > Steam & Vapor line
- > FCCU Fractionator isolation
(overhead & bottom line)
- > Catalyst service
- > Flare gas line

• CHEMICAL PLANT

- > Reactor Blowdown
- > Chemical Cleaning isolation
- > Mixing lines
- > Regeneration gas line
- > Filtration system
- > Loading station
- > Transfer line

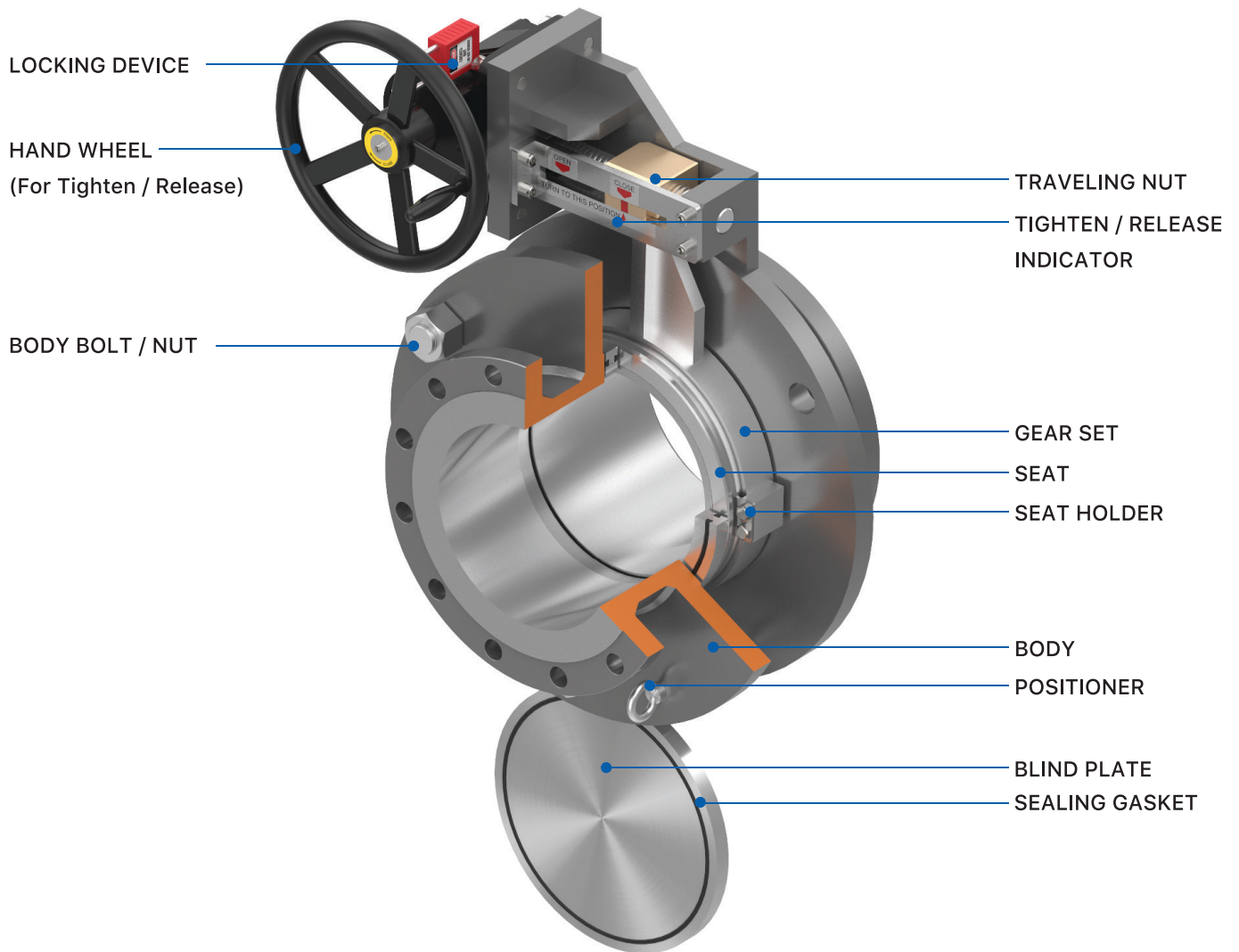
• OFFSHORE

- > FPSO
- > LNG ship
- > Shipboard lines
- > Vessel inlet
- > Inert Gas system

• STEEL

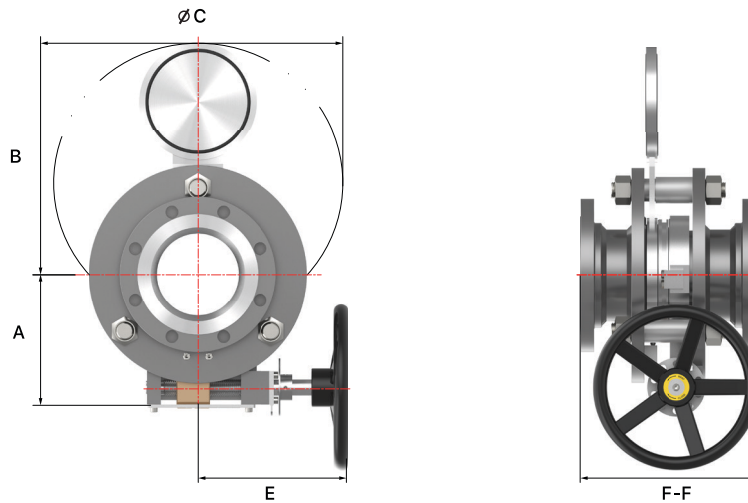
- > Coke Oven Gas
- > Blast Furnace Gas

Part & Description



Part name	CS Body & SS Slide	SS Body & Slide	Optional Material	
FLANGE	Carbon Steel	Stainless Steel	Martensitic or Ferritic Stainless steel Duplex or Super Duplex Low alloy steel Nickel & Nickel base alloy Nickel-Chromium-Iron alloy Chromium-Molybdenum alloy	
PIPE	Carbon Steel	Stainless Steel		
STREAM PLATE	Carbon Steel	Stainless Steel		
BLIND PLATE	Stainless Steel	Stainless Steel		
SEAT	Stainless Steel	Stainless Steel		
GEAR SET	Stainless Steel	Stainless Steel		
SCREW SHAFT	Stainless Steel	Stainless Steel		
STUD BOLT	SA193-B7	SA193-B8		for H2S Service /
HEX.NUT	SA194-2H	SA194-8		for Low Temp.
BLIND SEAL RING	Selection	Selection		Selection
SEAT SEAL RING	Selection	Selection	Selection	
WIPER	PTFE / GRAPHITE	PTFE / GRAPHITE	PTFE / GRAPHITE	
LOCKING DEVICE	P	P	-	

Dimensions

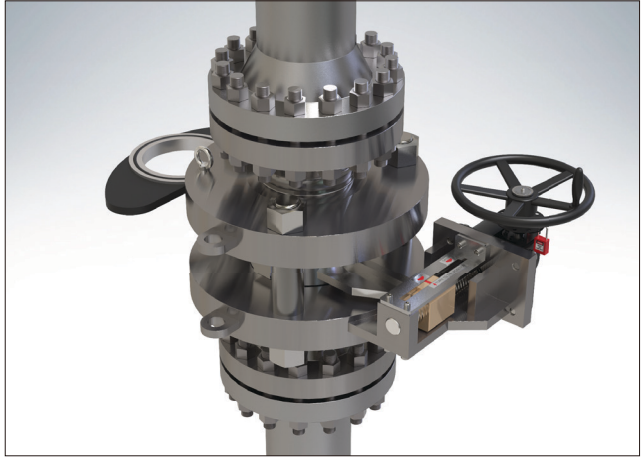
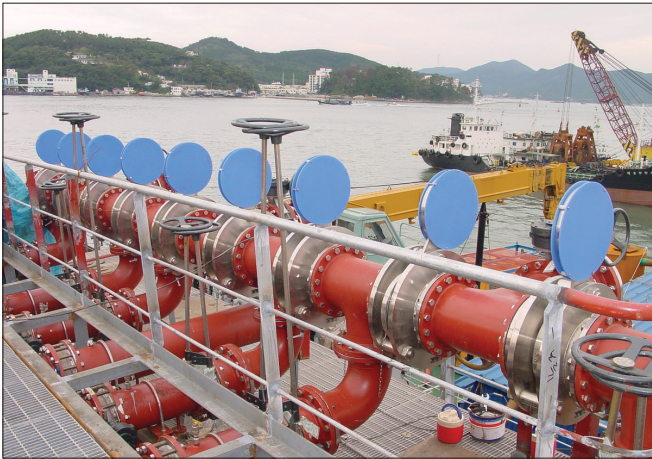
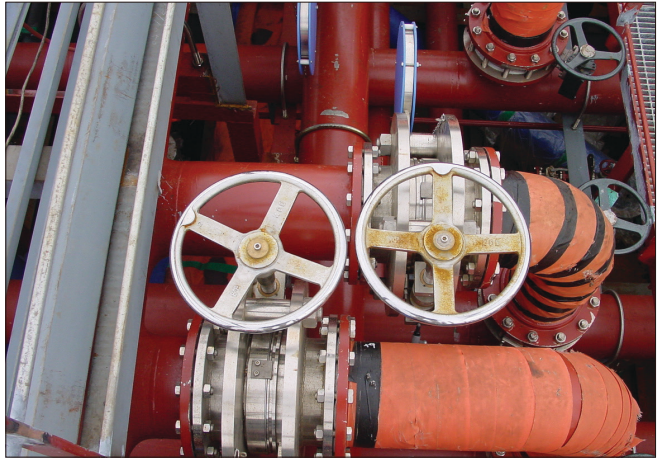
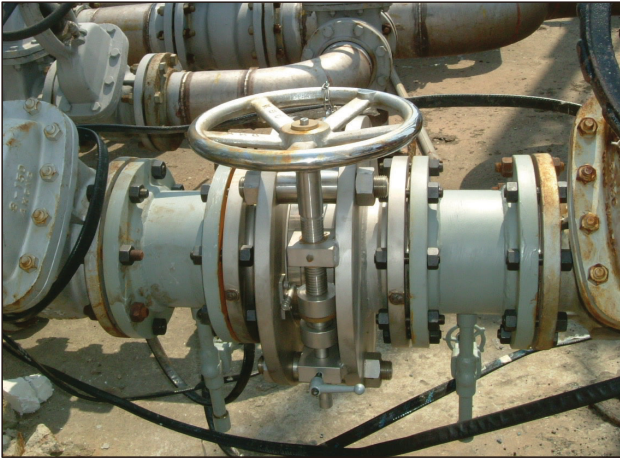


Class 150

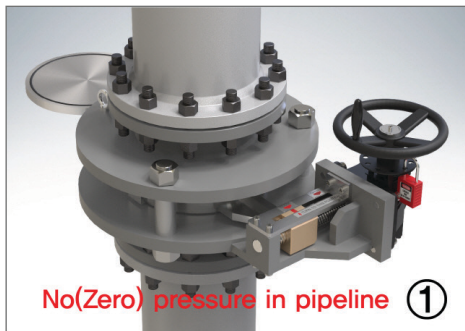
Size		F-F	A	B	Ø C	E	kg
inch	DN						Weight(NET)
1	25	190	100	133	163	148	10
1-1/2	40	200	102	163	201	153	15
2	50	220	134.5	193.4	237.8	190	24
2-1/2	65	240	135	220.3	272.4	220	30
3	80	240	173	263.1	327.1	225.2	35
4	100	250	196	298.5	375	240	56
6	150	320	249	415	520	271	87
8	200	340	295.5	510.5	643	309	125
10	250	370	382	594	754	374.5	225
12	300	430	410	678	862.5	356	310
14	350	450	475	748.3	949	400	540
16	400	550	513	851.6	1083.6	409.7	589
18	450	510	605.1	925.8	1183.9	512.2	725
20	500	750	659	1051	1336	546.1	1000
24	600	780	770	1235	1573	609	2300

Class 300

Size		F-F	A	B	Ø C	E	kg
inch	DN						Weight(NET)
1	25	200	90	133	163	146	12
1-1/2	40	230	110	167.4	205.5	186.4	18
2	50	240	127.3	193.7	238	202.6	30
2-1/2	65	270	135	220.3	272.4	220	35
3	80	260	173	263.1	327.1	225	45
4	100	320	189	297	372	230	81
6	150	410	266	409	514	270	130
8	200	490	350	506.4	637.7	340	210
10	250	480	406	609.5	769	350	265
12	300	530	456	716	905.5	363	410
14	350	620	498	781.5	986	410.6	650
16	400	660	514.9	871.9	1104.2	458.6	800
18	450	720	544	965.1	1229.8	470.5	950
20	500	780	595	1058	1350	496.5	1500
24	600	870	751.5	1213.6	1552.6	603.6	3000

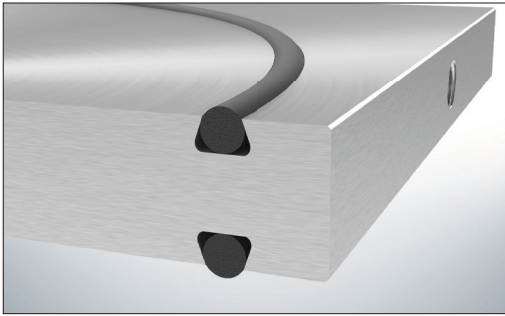


Operating Instruction



- 1). Before turning the handwheel to change the blind plate position, internal pressure of the valve must be drained and be sure no pressure(Zero).
- 2). Unlock locking device for turn to handwheel
- 3). To change the blind plate position, turn the handwheel clockwise until indicator reaches to "Open" mark.
- 4). When indicator is on "open" mark, change the blind plate position to open or close.
- 5). After change the blind plate position, turn the handwheel counter-clockwise until indicator reaches to "Close" mark to tighten the seat.
- 6). Lock locking device for can't use ahourized person

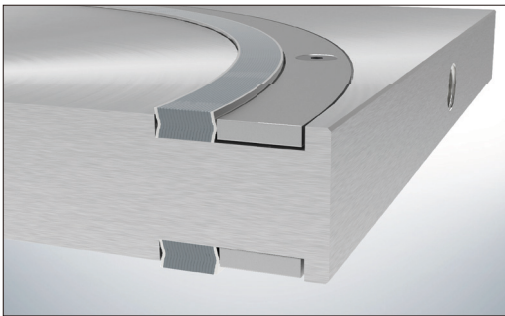
Sealing Material Guide



ELASTOMER O-RING

FKM
FFKM
FVMQ
Viton®
EPDM
NBR

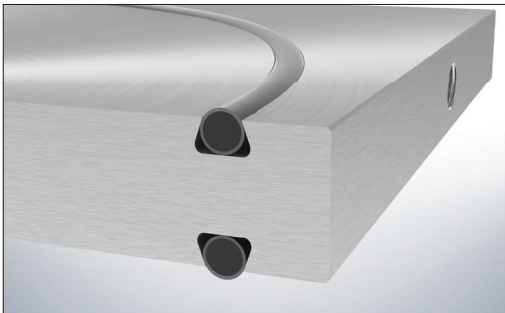
International Standard
Long durability
Excellent gas tightness
Easy to purchase
Selection depend on chemical resistance



SPIRAL WOUND GASKET

Graphite mold
Spiral wound

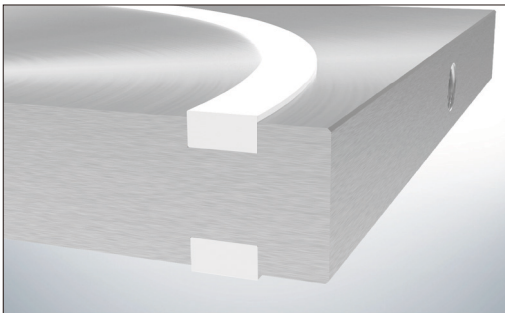
High temperature service
Cryogenic service
Excellent chemical resistance
Easy to purchase



TEFLON ENCAPSULATED O-RING

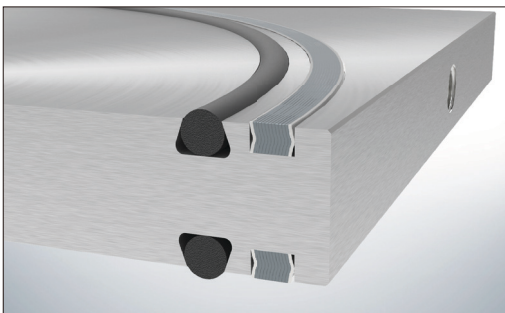
PFAV / FEPV / PFAS

International Standard
Excellent chemical resistance with teflon tube
Retaining elasticity with core o-ring
Excellent gas tightness
Long durability
Easy to purchase



PTFE GASKET

Excellent chemical resistance
Excellent tightness
Long durability
Easy to purchase



FIRE SAFE GASKET

Spiral wound
O-ring

Primary sealing with elastic o-ring
Secondary sealing with spiral wound gasket
Excellent gas tightness
Long durability
Easy to purchase

